



BLAST LIGHT

**BETTER VISIBILITY.
BETTER BLASTING.**



This premium light is Available with a 20W or 35W halogen bulb and features a very tough cast aluminum housing. The Blast Light operates on low voltage (12VDC) and is available with a 120VAC converter for use with standard wall outlet voltage.

12V Blast Light Assys

LITE100	Blast Light Complete, 12V, Halogen, 20W , 10' Cord
LITE200	Blast Light Complete, 12V, Halogen, 35W , 10' Cord



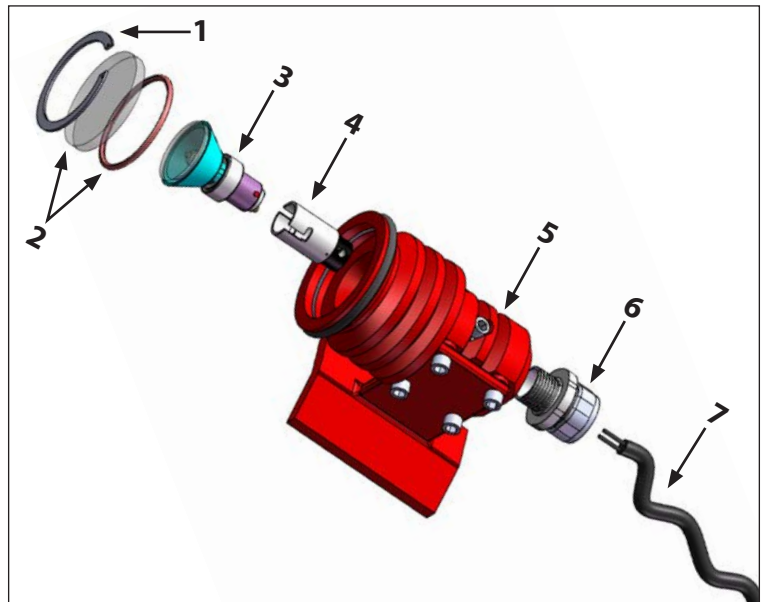
120V Blast Light Assys

LITE100-075	Blast Light Complete w/ 120VAC to 12 VDC Converter, Halogen, 20W , 75' Cord
LITE100-125	Blast Light Complete w/ 120VAC to 12 VDC Converter, Halogen, 20W , 125' Cord
LITE100-150	Blast Light Complete w/ 120VAC to 12 VDC Converter, Halogen, 20W , 150' Cord
LITE200-075	Blast Light Complete w/ 120VAC to 12 VDC Converter, Halogen, 35W , 75' Cord
LITE200-125	Blast Light Complete w/ 120VAC to 12 VDC Converter, Halogen, 35W , 125' Cord
LITE200-150	Blast Light Complete w/ 120VAC to 12 VDC Converter, Halogen, 35W , 150' Cord



Replacement Parts

	LITE101 BLAST LIGHT, OUTER LENS RETAINING CLIP
	LITE102 BLAST LIGHT, PYREX LENS, INCLUDES O-RING
	LITE286 BLAST LIGHT, 20 WATT REPLACEMENT BULB
	LITE284 BLAST LIGHT, 35 WATT REPLACEMENT BULB
	LITE105 BLAST LIGHT, LAMP SOCKET
	LITE106 BLAST LIGHT, BODY ONLY, INCLUDES HOSE MOUNT BRACKET AND BUMP RING
	888-7117-504PB STRAIN RELIEF FITTING
	10-203 CONTROL CORD, 16.2, 2 WIRE



Commonly Purchased with Items

	888-7110-024PB ALLIGATOR CLIP (2 REQUIRED)
	888-7111-261PB INSULATOR, RED
	888-7111-262PB INSULATOR, BLACK
	PB-31131 1/2" 3 PART SEALED CONTROL CORD CONNECTOR